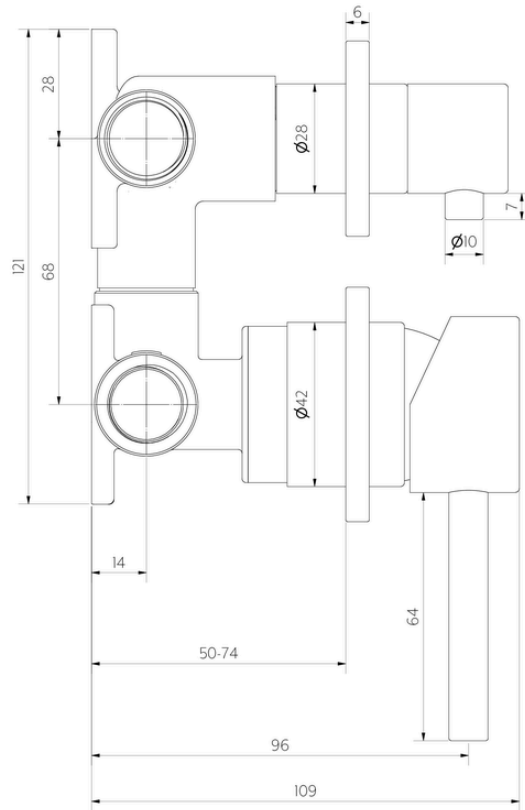


Front View



Side View

**Note:** Dimensions are nominal measurements only

## SPECIFICATIONS

### RECOMMENDED USE | WARRANTY

Domestic / Commercial | [Click here for warranty periods](#)

### MATERIAL

Stainless Steel 316

### TEMPERATURE RATING

Maximum continuous working temperature 75°C  
If the water temperature exceeds 75°C, an approved tempering valve must be fitted

### PRESSURE RATING

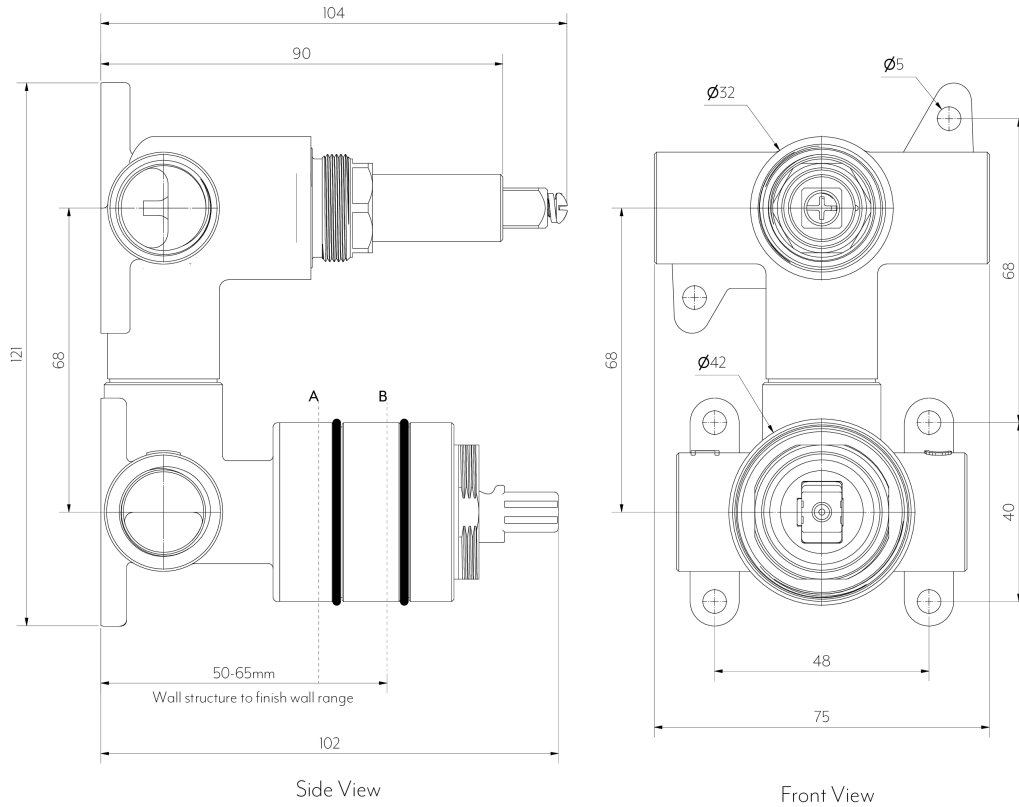
Recommended minimum working pressure 150kPa  
Recommended maximum working pressure 500kPa  
Hot and cold water inlet pressure should be equal

### SUITABLE HOT WATER UNITS

Storage tank: Yes  
Continuous Flow: Yes  
Gravity Feed: Not Suitable

### PACKAGING

Box 1 of 3 In-wall Minimal Diverter Mixer Body (Rough-In)  
Box 2 of 3 Sola Minimal Mixer Handle Kit (Fit-Off)  
Box 3 of 3 Sola Diverter Backplate, Sleeve & Knob JCP (Fit-Off)



**Note:** Dimensions are nominal measurements only

## SPECIFICATIONS

### RECOMMENDED USE | WARRANTY

Domestic / Commercial | [Click here for warranty periods](#)

### MATERIAL

Stainless Steel 304

### TEMPERATURE RATING

Maximum continuous working temperature 75°C  
If the water temperature exceeds 75°C, an approved tempering valve must be fitted

### PRESSURE RATING

Recommended minimum working pressure 150kPa  
Recommended maximum working pressure 500kPa  
Hot and cold water inlet pressure should be equal

### SUITABLE HOT WATER UNITS

Storage tank: Yes  
Continuous Flow: Yes  
Gravity Feed: Not suitable

# INSTALLATION GUIDE

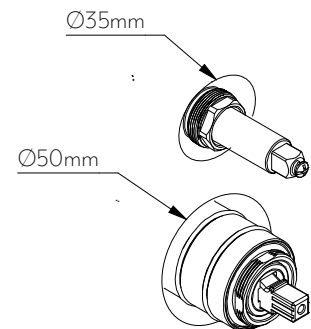
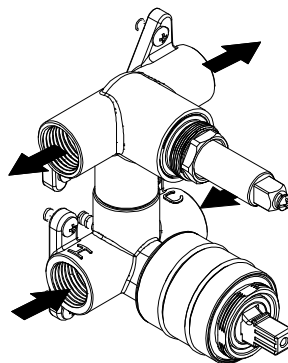
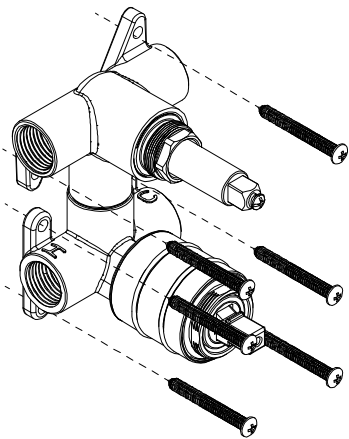
**Note:** This product must be installed by a licensed plumber. This is a general installation guide - there are many factors involved that can alter the installation method. **AU/NZ:** For installations within Australia and New Zealand, this product must be installed in compliance with AS/NZS 3500. **UK:** For installations in the United Kingdom this product must be installed in compliance with the Water Supply (Water Fittings) Regulations and Water Supply (Water Fittings) (Scotland) Byelaws. **Other:** For installations outside these countries, this product must be installed in compliance with the standards in your respective country.



## ROUGH IN

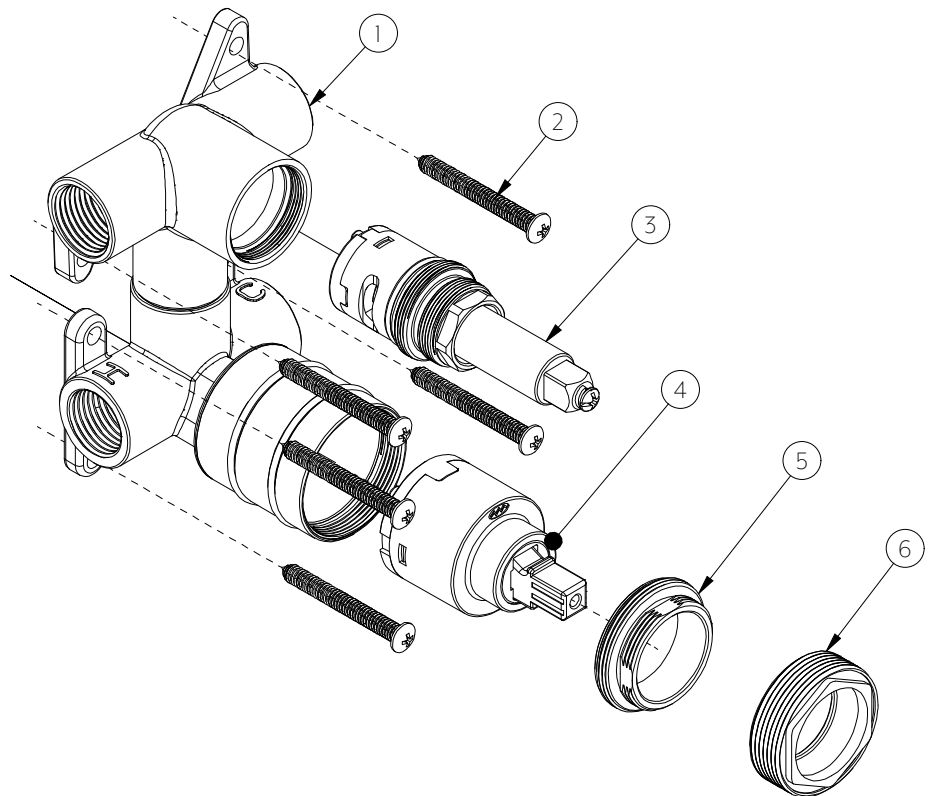
See specification image for finish wall setback

- 1 Screw in-wall body into wall structure with provided screws.
- 2 **\*NOTE:** Two locking nuts are included in packaging. Please ensure correct one is installed for the chosen range of tapware prior to connecting water supply. Connect hot, cold and both mixed lines. **TEST AND CHECK FOR LEAKS.**
- 3 Sheetting and waterproof layer can now be applied.  
**\*Ensure cutout in finish wall is Ø50mm for the mixer handle and Ø35mm for the diverter.**



## WHAT'S IN THE BOX

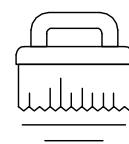
1. Body
2. Fixing screws (x6)
3. Diverter cartridge
4. Mixer cartridge
5. Locking nut (NESSO)
6. Locking nut (SOLA & ALIRO)



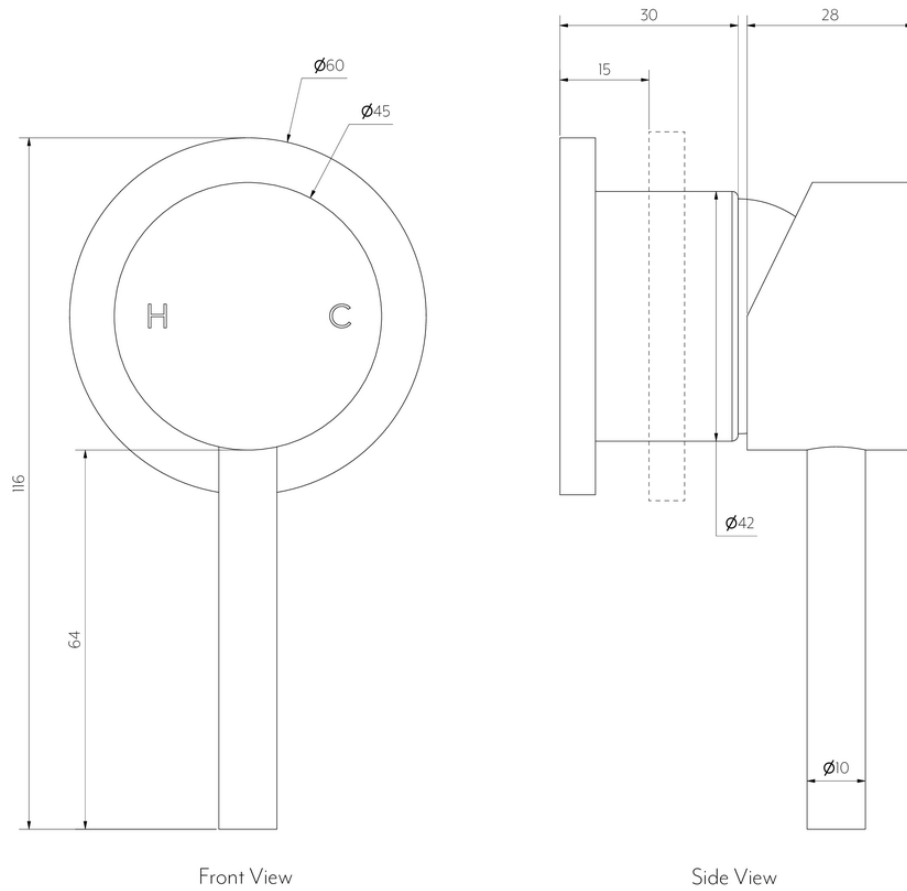
Regularly clean with mild liquid detergent or soap and water



DO NOT use cream cleaners or bleach. These substances are abrasive



DO NOT use cleaning pads with abrasive surfaces as this may scratch the material



**Note:** Dimensions are nominal measurements only

## SPECIFICATIONS

### RECOMMENDED USE

Domestic

### MATERIAL

316 Stainless Steel

# INSTALLATION GUIDE

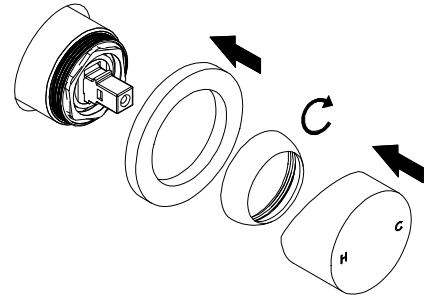
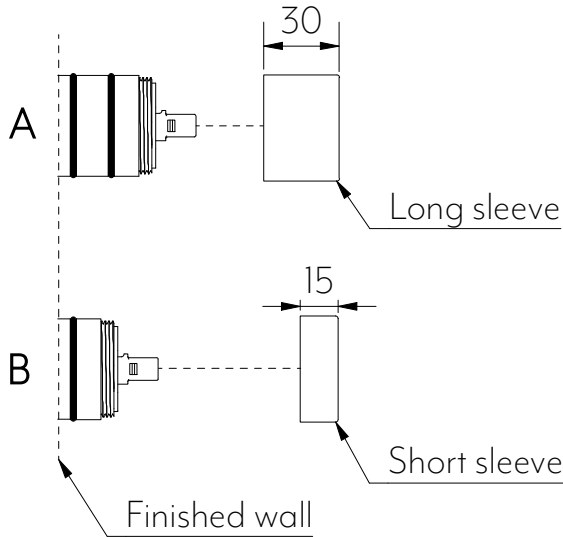
**Note:** This product must be installed by a licensed plumber. This is a general installation guide - there are many factors involved that can alter the installation method. **AU/NZ:** For installations within Australia and New Zealand, this product must be installed in compliance with AS/NZS 3500. **UK:** For installations in the United Kingdom this product must be installed in compliance with the Water Supply (Water Fittings) Regulations and Water Supply (Water Fittings) (Scotland) Byelaws. **Other:** For installations outside these countries, this product must be installed in compliance with the standards in your respective country.

ABI  
INTERIORS

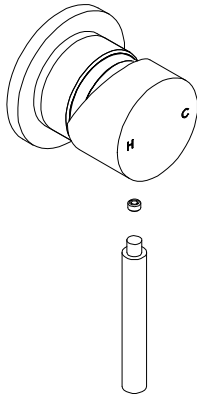
**Note:** See 316 Stainless Steel In Wall Mixer Body installation guide for in-wall set out.

- 1 Choose sleeve based on how far your in-wall body protrudes from finish wall and slide on.

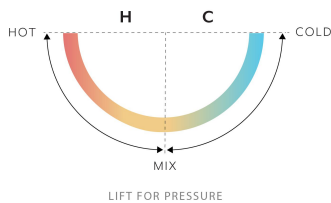
- 2 Slide back plate over sleeve ensuring not to scratch. Screw dome on and fit handle onto cartridge.



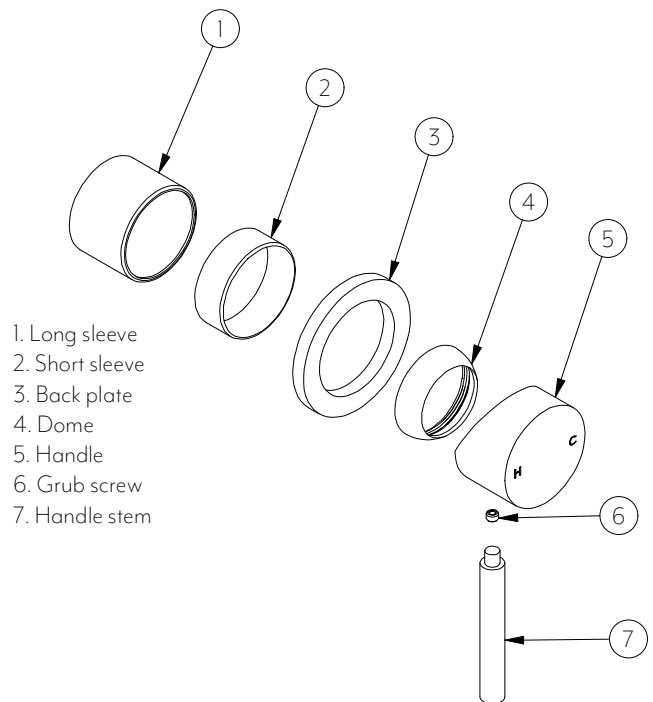
- 3 Tighten grub screw with provided Allen Key. Screw stem into handle. Test and commission.



## MIXER OPERATION



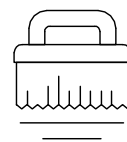
## WHAT'S IN THE BOX



Regularly clean with mild liquid detergent or soap and water



DO NOT use cream cleaners or bleach. These substances are abrasive



DO NOT use cleaning pads with abrasive surfaces as this may scratch the material

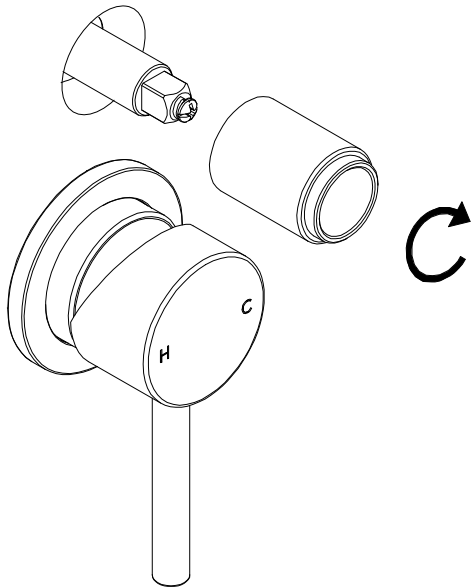
# INSTALLATION GUIDE

**Note:** This product must be installed by a licensed plumber. This is a general installation guide - there are many factors involved that can alter the installation method. **AU/NZ:** For installations within Australia and New Zealand, this product must be installed in compliance with AS/NZS 3500. **UK:** For installations in the United Kingdom this product must be installed in compliance with the Water Supply (Water Fittings) Regulations and Water Supply (Water Fittings) (Scotland) Byelaws. **Other:** For installations outside these countries, this product must be installed in compliance with the standards in your respective country.

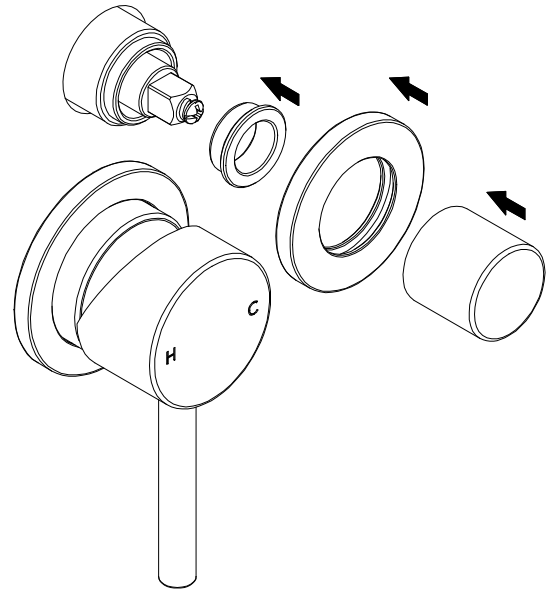


Please refer to I N-WALL MINIMAL DIVERTER MIXER BODY - 304 SS install guide & SOLA - MINIMAL HANDLE KIT install guide for initial steps.

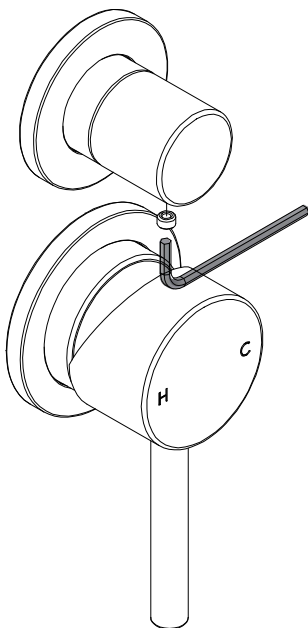
- 1 Screw sleeve onto diverter nut.



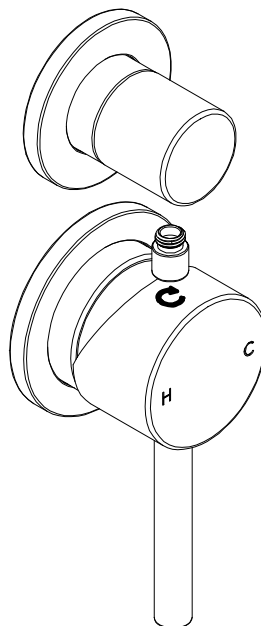
- 2 Insert plastic spacer into sleeve, slide diverter back plate over sleeve, then push handle onto the end of the diverter.



- 3 Screw grub screw into handle with provided Allen Key.



- 4 Screw diverter stick onto handle. Test and commission



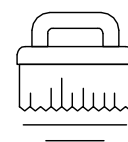
In The Box
1 x Back diverter plate
1 x Diverter sleeve
1 x Plastic spacer
1 x Diverter handle
1 x Diverter stick



Regularly clean with mild liquid detergent or soap and water



DO NOT use cream cleaners or bleach. These substances are abrasive



DO NOT use cleaning pads with abrasive surfaces as this may scratch the material